



SISMA

G. GIOANOLA

METERING EFFICIENCY

DOMUS

LIQUID-FILLED ROLLS

MODELS

DPRF/15 - DPRF/20 - DPRF/25 - DPRF/32 - DPRF/40

DPRC/15 - DPRC/20 - DPRC/25 - DPRC/32 - DPRC/40



LIQUID-FILLED ROLLS WITH FULLY PROTECTED DRY DIAL SINGLE JET METER

MODELS
DDRF/15
DDRF/20
DDRF/25
DDRF/32
DDRF/40

- ❖ Single jet water meter, straight reading on 5 numbered drums
- ❖ DPRF model, liquid-filled sealed counter type, measuring range up to R250H/R160V, for use with turbid and calcareous water and in hard water areas, temperature class T50
- ❖ DPRC model, liquid-filled sealed counter type, measuring range up to R250H/R160V, for use with turbid and calcareous water and in hard water areas, temperature class T90
- ❖ DDRF model, liquid-filled sealed counter type with FULLY PROTECTED DRY DIAL, measuring range up to R250H/R160V, for use with turbid and calcareous water and in hard water areas, temperature class T50. Counter and dial face with MID inscriptions not in contact with water
- ❖ **U0-D0**: Straight pipe not required upstream or downstream of meter
- ❖ **MID** approved according to European Directive 2014/32CE (module B + D) in compliance with the norms **ISO 4064, EN 14154** and **OIML R49**
- ❖ All models are certified for use with potable water in accordance with the Italian ministerial decree **D.M. 174** in compliance with the European Directive 98/83CE (Drinking Water Directive)
- ❖ All models can be supplied upon request with a pulse-emitting device or **pre-equipped** for the installation of data communication modules
- ❖ Horizontal and vertical installation positions

DN nominal size mm -inches		15 - 1/2	20 - 3/4	25 - 1	32 - 1.1/4	40 - 1.1/2	
Q ₃	Permanent flow rate	m ³ /h	2,5	4,0	6,3	10	16
Q ₄	Overload flow rate	m ³ /h	3,125	5,0	7,875	12,5	20
Q ₂	Transitional flow rate at measuring range R80 [MPE ±2%]	l/h	50	80	126	200	320
Q ₁	Min flow rate Q1 at measuring range R80 [MPE ±5%] %	l/h	31,25	50	78,75	125	200
Q ₂	Transitional flow rate with measuring range R160H [MPE ±2%]	l/h	25	40	63	100	160
Q ₁	Minimum flow rate with measuring range R160H [MPE ±5%]	l/h	15,63	25	39,38	62,5	100
S	Accuracy at measuring range R80	l/h	10	15	20	20	25
S	Accuracy at measuring range R160	l/h	5	8	8	13	18
	Accuracy class		2	2	2	2	2
	Environmental class		C	C	C	C	C
ΔP	Pressure loss class	bar	0,63	0,63	0,63	0,63	0,63
MAP	Max allowed working pressure	bar	16	16	16	16	16
	Dial register from /to	m ³	0,0001/100.000	0,0001/100.000	0,0001/100.000	0,0001/100.000	0,0001/100.000
A	Meter lenght without couplings	mm	110-115	130	160	160	200
	Meter lenght with couplings	mm	190-195	228	260	280	340
C	Height with open lid	mm	150	150	185	185	200
D	Height with closed lid	mm	83	83	103	103	120
B	Maximum diameter	mm	80	80	100	100	110
E	Height of tube	mm	24	24	34	34	42
	Weight with couplings kit	kg	0,850	1,100	1,750	2,000	3,460
	Weight without couplings kit	kg	0,690	0,860	1,280	1,330	2,420
	Threaded connection		G3/4" x R1/2"	G1" x R3/4"	G1"1/4 x R1"	G1"1/2 x R1"1/4"	G2" x R1"1/2"

MODELS:

Temperature class T50
LIQUID FILLED SEALED counter type
DPRF/15 DN 15
DPRF/20 DN 20
DPRF/25 DN 25
DPRF/32 DN 32
DPRF/40 DN 40

Temperature class T90
LIQUID FILLED SEALED counter type
DPRC/15 DN 15
DPRC/20 DN 20
DPRC/25 DN 25
DPRC/32 DN 32
DPRC/40 DN 40

Temperature class T50
LIQUID FILLED FULLY PROTECTED SEALED counter type
DDRF/15 DN 15
DDRF/20 DN 20
DDRF/25 DN 25
DDRF/32 DN 32
DDRF/40 DN 40

Available on request:

- Up to R250H
- Up to R160V

Ci riserviamo di modificare in qualsiasi momento, senza preavviso, le caratteristiche tecniche, le dimensioni ed i pesi indicati nella presente scheda tecnica. Le illustrazioni non sono impegnative. 02-25

PULSED WATER METER



REED SWITCH PULSE SENSOR TECHNICAL DATA

- Contact ratings: 24 V - 0,2 A
- Standard length of cable supplied: 2 m

PULSE VALUES K

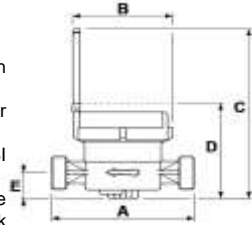
- Number of liters per pulse available (pulse value must be stated when ordering):
1 - 10 - 100 - 1000

M-BUS OPTION

Mod. ADAPTO (to purchase separately): adapter to convert the signal generated by the reed sensor into a M-Bus signal (refer to page. 42).

AVAILABLE OPTIONS

- Models DN15 and DN20 can be fitted, on request, with non-return valve;
- The serial number (also under "barcode") can be laser engraved on the dial;
- All models can be supplied pre-equipped or fitted with PSI inductive sensor or Hall effect sensor
- All models can be supplied with radio module for remote reading based on LoRaWAN™ protocol for fixed network and LoRA protocol for walk-by/drive by, 868MHz Wireless M-Bus OMS, NB-IoT.



TYPICAL ERROR CURVE

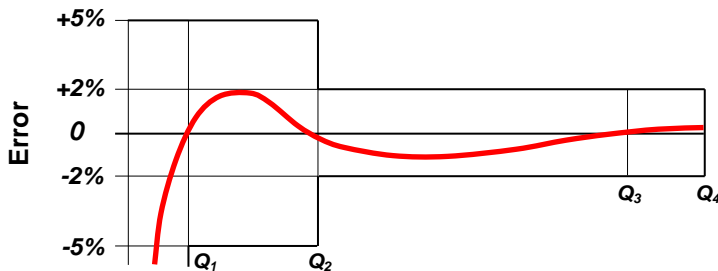


DIAGRAM HEAD LOSS DIAGRAM

