



SISMA

# G. GIOANOLA

METERING EFFICIENCY

## OBLO' MAXI *plus*

REMOVABLE DESIGN WATER METER  
BUILT-IN SUPER DRY  
360° ROTATING COUNTER  
WITH SHUT-OFF VALVE  
DRY DIAL



OMS®

M-Bus  
wireless

## OBLO' MAXI *superplus*

- ❖ Flush-mounting metering system complete with a single jet water meter SUPER DRY model and a shut-off valve
- ❖ DRY dial for turbid and very calcareous water, clockwork adjustable at 360°C
- ❖ OBLO' MAXI *plus* model DN 15 Q3 2,5, built-in box with threads 1/2" M, temp. class T90, measuring range starting from R80
- ❖ OBLO' MAXI *superplus* model DN 15 Q3 2,5 built-in box with threads 1/2" M, temp. class T90, measuring range starting from R80, with Wireless M-Bus radio module
- ❖ The meter inside the system can be removed even after built-in installation and can be replaced over time
- ❖ It is proposed as an elegant piece of furniture for bathroom and kitchen and brilliantly solves the aesthetic problem of regular meters; the system is fitted with rosette and finishing cap, plastic box complete with fittings, plastic protective cover and holding extension for easy installation
- ❖ **U0-D0**: straight pipe not required upstream or downstream of meter
- ❖ All models are **MID** approved according to the European Directive **2014/32/EU** (module B+D) and in compliance with the norms **ISO 4064, EN 14154 and OIML R49**
- ❖ Certified for use with potable water according to Ministerial Decree 174.

# OBLO' MAXI *plus - superplus*

| DN size mm – inches of meter only |  |                   | 15 - 1/2       |
|-----------------------------------|--|-------------------|----------------|
| Q <sub>3</sub>                    | Permanent flow rate  | m <sup>3</sup> /h | 2,5            |
| Q <sub>4</sub>                    | Maximum flow rate for short period                         | m <sup>3</sup> /h | 3,125          |
| Q <sub>2</sub>                    | Transitional flow rate with measuring range R80H [MPE ±2%] | l/h               | 50             |
| Q <sub>1</sub>                    | Minimum flow rate with measuring range R80H [MPE ±5%]      | l/h               | 31,25          |
| S                                 | Accuracy at measuring range R80H                           | l/h               | 7              |
|                                   | Accuracy class   |                   | 2              |
| ΔP                                | Pressure loss class  | bar               | 0,63           |
| MAP                               | Maximum allowed working pressure                           | bar               | 16             |
|                                   | Dial register from/to                                      | m <sup>3</sup>    | 0,001 / 99.999 |
|                                   | Weight of kit made by meter, rosette, cover                | kg                | 1,600          |
|                                   | Weight full built-in box 1/2" M                            | kg                | 1,750          |
|                                   | Shut-off ball valve, full flow                             |                   | DN15           |

## MODELS:

### Temperature class T90

OBLO' MAXI *plus*/15 Q<sub>3</sub> 2,5  
DN 15 connections 1/2" M

### Temperature class T90

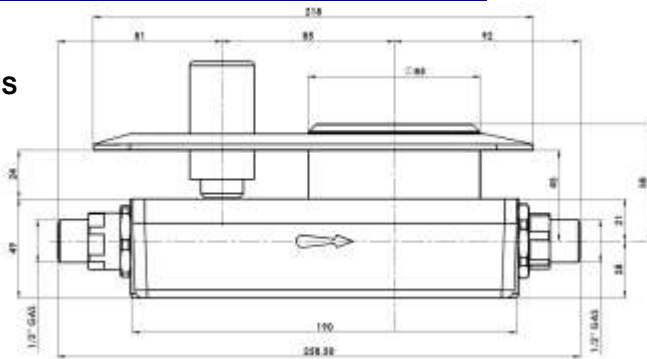
OBLO' MAXI *superplus*/15 Q<sub>3</sub> 2,5  
DN 15 connections 1/2" – with  
Wireless M-Bus radio Module



OBLO' version without shut-off valve also available in DN15 - Q<sub>3</sub> 2.5 with 3/4" F connections



## OVERALL DIMENSIONS



The company's policy is one of continuous product improvement and the right is reserved to modify the specifications contained herein without notice. Illustrations are not binding. 02-25

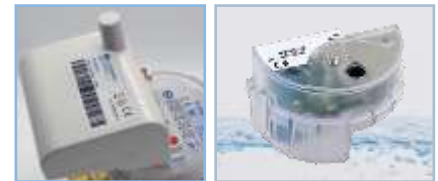
The internal meter and the shut-off valve, even after installation, are easily accessible and separable from the recessed box: in the event of a breakdown, it is easy to replace them with considerable time savings, avoiding the need to break the wall and the tiles. Replacing components requires upstream closure of the box.

The 360° adjustable counter on the SUPER DRY meter allows installation in any direction of the water flow (top, bottom, right or left).

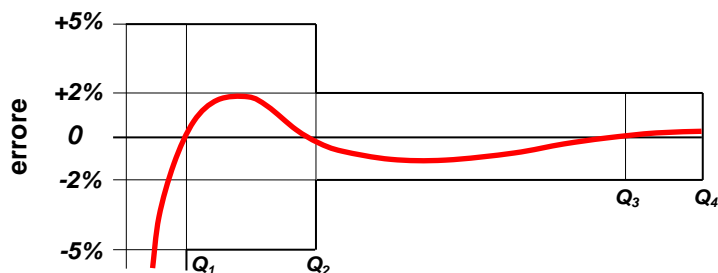
The unit has a sliding rosette on the cap to accommodate different mounting depths. **Minimum embedding depth 30 mm from flush plaster to pipe center. Maximum cistern embedment depth is 45 mm from flush plaster to center pipe or 68 mm from flush plaster to back of cistern (subtract from these measurements the thickness of wall covering, if any).**

## AVAILABLE OPTIONS

- Extended chrome cap available on request to increase maximum recessed depth by an additional 20 mm.
- All models can be supplied prepared or complete with radio module for remote reading with W-Mbus OMS protocol for walk-by/drive-by, and/or with LoRaWAN TM protocol for fixed network with 868Mhz frequency, and NB-IoT protocol.
- All models can be supplied with inductive sensor complete with radio module



## TYPICAL ERROR CURVE



## HEAD LOSS DIAGRAM

